



Bnos Leah Prospect Park **Parent-Student Handbook** **2025-2026**

... CONTENTS ...

Elementary School

Attendance	2
Dress Code	3
School Policies & Procedures	4
Arrival and Dismissal Procedures	4
Closing Due to Inclement Weather	5
School Lunch	5
<i>Kashrus</i>	5
Birthdays	5
Messages/Packages	5
Conduct in the School Building	6
Reorganization of Classes	6
Report Cards and PTA Conferences	6
Protocol for Addressing Concerns	6
Health and Safety	7
Media	8
Homework	9
<i>Bas Mitzvah</i>	9

High School

The Attendance System	12
Electronic Devices In School	16
Snow Days	17
Uniforms	17
Lost and Found	19
Recreation	19
Digital Technology	21
Driving	22
Vacation	22
School Expenses	23

בנות לאה



Bnos Leah

Prospect Park Yeshiva

בס"ד

Dear Parents, עמו"ש

Teachers and parents are the שותפים in each child's חינוך. When both parties: school and parents are on the same page, there is a more successful חינוך experience. Rules and goals that we need to agree on are found in the Parent-Student handbook which also contains information designed to aid your child to a successful school outcome. I hope that you will read it and discuss it with your daughter(s).

Our Yeshiva strives to develop and to instill in our students מדות טובות, a love of learning, sensitivity to others, discipline and דרך ארץ. In addition, we want our תלמידות to grow into mature and responsible women fully accepting, with אהבה, their roles as בנות ישראל and future אמהות.

No one rule is important in and of itself. It is the sum total of the atmosphere they create and the students' and parents' willingness to accept them that is important.

Together we look forward to another successful year. Best wishes for *Hatzlacha*.


Rabbi Leib Kelman
Dean

ELEMENTARY SCHOOL PARENT HANDBOOK

This handbook has been developed to answer some of the questions that come up during the school year. It is designed to orient parents to the rules and routines of our School and ensure a seamless partnership between school and home.

Rabbi Leib Kelman, *Dean*

Rabbi Akiva Kelman, *Associate Dean*

Mrs. Shaindy Schapiro, *Principal*

... ATTENDANCE ...

Your daughter's regular attendance in school is a prerequisite for achievement, especially in a dual program where every precious moment counts. Every attempt should be made to schedule medical, dental and other appointments outside of class time.

Children should not be pulled out of class for extended family matters (i.e. vacations) without contacting the principal in advance for special permission. If we are not notified prior to the absence, children may receive un-excused absences placed on their permanent records.



* ABSENCE

In case of absence, parents should arrange for assignments and books to be sent home with a friend. This should be done from home early, before school begins, or after school for the following day. Please do not call the school office to make these arrangements.

* PROMPTNESS

It has been said "better late than never." A better maxim is "better never late." The child who comes late not only misses crucial components of class time, but also disrupts those who are on time. If a student does come in late, she must have a note written by a parent. The student should submit the note to the secretary and the secretary will then give her a late pass. Repeated lateness in junior high students may result in detention. Parents will be expected to arrange transportation home at 5 P.M. following detention.

... **DRESS CODE** ...

Our school has a uniform dress code for all students grades 1-8.

* **BLOUSES**

Grades 1 - 4 **Blue** uniform blouse (or polo)
with PPY logo

Grades 5 - 8 **Blue** uniform blouse with PPY logo

On Rosh Chodesh students should preferably wear **collared** white oxford blouses.

* **SKIRTS/JUMPERS**

Grades 1 - 5 A gray pleated skirt or gray jumper purchased by one of
our uniform suppliers. **The skirt must reach several
inches below the knee.**

Grades 6 - 8 High-school length skirts required

Grades 1 - 8 Skirts and knee-socks must overlap.

* **SWEATERS AND SWEATSHIRTS**

Grades 1-8 Black sweaters or sweatshirts with no emblems, words or
designs. Black V-neck sweaters and velour zip up sweaters
with the PPY logo are available at all school uniform
vendors

* **FOOTWEAR**

Only knee socks or tights are permitted. **Leggings are not permitted.**

Students should not come to school in Ugg clogs or open-backed footwear.

* **HAIR and MAKEUP**

Long loose hair must be pinned back or put in a ponytail.

Make-up and nail polish are not permitted. Jewelry should be refined and age appropriate.

* UNIFORM SUPPLIERS

Shanie Brodt	1865 East 22nd Street	718-336-4651
	Email: shanie@sbrodtuniforms.com	
Engelic	4414 Ft. Hamilton P'kwy.	718-853-6483
Gold Label Uniforms	1488 Coney Island Avenue (K&L)	718-534-4653
Fraylich School Uniforms	4505 14th Avenue	718-871-8253

* GENTLY WORN UNIFORMS

We have a large collection of gently worn uniforms. Parents are welcome to take whatever they need from the closet at the entrance of the building.

...SCHOOL POLICIES & PROCEDURES...

* ARRIVAL and DISMISSAL PROCEDURES

School hours for grades 1-8 are as follows:

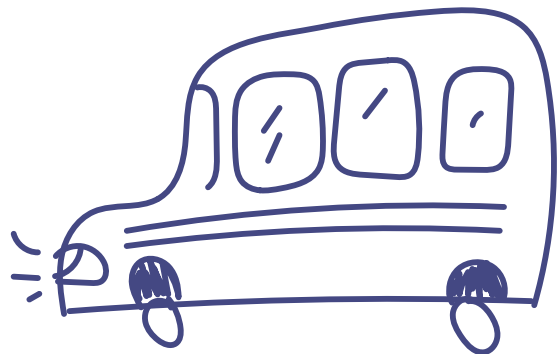
Monday - Thursday 8:20-4:00, Friday 8:20-12:25

Please be aware that classes begin promptly at **8:20**.

There is no supervision in the school building before 8:00 a.m.

Drop off is at the Avenue R entrance. If, due to unforeseen circumstances you arrive past 8:30, you must go to the East 17th Street entrance. Pick up upon dismissal is from the Avenue R entrance.

Our school uses a private bus company. This allows, in most cases, for a bus stop closer to your home. We ask that you please send all forms that you received regarding bus service back in a timely fashion. Without all forms, we cannot guarantee service for your daughter(s).



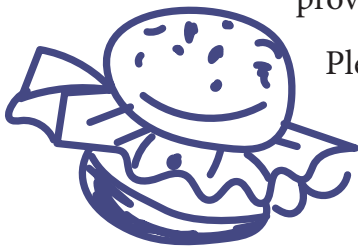
* CLOSING DUE TO INCLEMENT WEATHER

For school closure and all other important matters (i.e. bus delays), we use a wonderful and efficient system to notify parents via text and email. We generally follow the N.Y.C. D.O.E. decisions for school closings.

* SCHOOL LUNCH

We serve MEAT lunches on Tuesday and DAIRY lunches the rest of the week. If you send lunch from home, please conform to this schedule.

Please do not send any foods requiring hot water (ie soup cups). The school can not provide hot water as it presents a safety hazard.



Please send healthful snacks from home, but please **do not send milchig snacks on fleishig days.** Our school serves only *cholov Yisroel* products, therefore, all *milchig* snacks sent to school **should** be *cholov Yisroel*.

* KASHRUS

The Yeshiva upholds a strict policy on *kashrus*. Please do not send in home-made items for *siyumim*, parties, or any class gatherings. All food items must have a reliable *hechsher*. Only *pas yisroel* and *cholov yisroel* will be accepted. Please only send in *parve* items when meat lunches are served (Tuesday).

* BIRTHDAYS

In order for school to run efficiently and to avoid ill feelings amongst our students, we do not allow birthday celebrations in school. Please do not send in any food, decorations, balloons etc. We are happy to make note of your daughter's special day in the newsletter.

* MESSAGES/PACKAGES

Please limit your calls to important messages only.

Drop offs of lunches, materials, assignments etc. should be the rare exception, not the rule.

Help us as we foster independence and responsibility in our students. Please refrain from sending restaurant deliveries.

* CONDUCT IN THE SCHOOL BUILDING

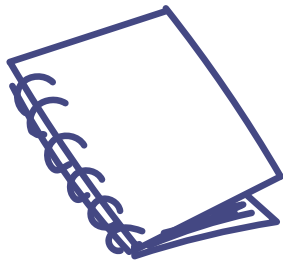
- No student may leave the building during school hours.
- Parents who wish to pick up their daughter, must sign her out with the security guard.
- No student is allowed in the elevator without written permission from a principal or nurse.
- No ball playing in the halls or classrooms. Ball playing is permitted only in the yard and gym.
- Students may not use smartboards or computers without teacher supervision.

* REORGANIZATION OF CLASSES

The Yeshiva reserves the right to reorganize classes. From time to time there are specific issues within the class dynamics which require the reorganization of that class, grade or moving individual students.

* REPORT CARDS and PTA CONFERENCES

The school year is divided into three marking periods. Report cards will be distributed in December, March and June. Parents must be up to date with their tuition payments to receive their daughter's report card.



We schedule an orientation meeting in September/October. Parents are invited to meet the teachers and are given an overview of the curriculum. There will be one P.T.A. conference in December. Individual conferences are scheduled throughout the year. If you wish to schedule a conference with a teacher please arrange it through the school office.

* PROTOCOL FOR ADDRESSING CONCERNS

On occasion, a parent feels the need to intercede on behalf of their child with a school related academic, social or discipline issue. We recommend the following steps:

1. First, please talk directly to the classroom teacher involved. Call the school office to set up an appointment. In 90% of the cases this problem will be pleasantly resolved. Only after you have spoken directly to the teacher, should you go further.
2. If you feel the issue is not completely resolved, feel free to call the school principal.

3. Please be aware that we have a superb professional guidance staff. Their services are discreet and cost-free to the parents. Please make use of their services if necessary.

... HEALTH AND SAFETY ...



Students should have a complete check-up before school begins. Visual and hearing functions should be assessed; physical problems should be called to our attention, in writing. Often learning difficulties can be rectified by appropriate attention to physical needs.

*** EMERGENCIES**

In case of emergency, parents will be notified immediately. Please fill out an emergency card before the start of every school year. No student will be admitted to school without this emergency information.

*** ALLERGIES**

If a child has a specific allergy, a written note should be sent to all her teachers and to the school nurse.

*** CONTAGIOUS DISEASE**

Please inform the school office if your child has a contagious disease. Do not send your child to school when she is sick and contagious.

*** IMMUNIZATIONS**

The Board of Health has a strict policy that all students must be fully immunized according to the requirements for their age. Please submit an updated health form to ppy@bloppy.org.

* SECURITY

The school has a full-time security guard and video security systems including sixteen cameras and a computer network link.

* LOCKDOWN

Our Yeshiva has invested in a closed circuit lockdown system. When a lockdown is in effect, an electronic system controlled in the main office automatically locks all hallway doors. The lockdown system has its own power source. Students and teachers are alerted to the fact that we are in a lockdown via flashing blue lights and an announcement on the intercom. Immediately, all teachers lock their classroom door and shut the lights as the students make their way to the designated “safe corner”.

... MEDIA ...

* DIGITAL MEDIA

One of the greatest challenges parents and educators face today is that of digital technology. We conduct both parent and student workshops designed to educate and encourage healthy and safe technology practices.

Additionally, **students may not bring any cell phone or any Internet or phone capable devices to school.** This rule will be strictly enforced. Please help us maximize your childrens’ foundational educational years by keeping them free of technological distractions.

... HOMEWORK ...

Homework is assigned to children to review what they learned during the day and to ensure that they remember key concepts and ideas. Homework is not meant for parents, but for children. Parents should support and supervise homework as necessary.



The school has a “No *Written* Homework Policy” on Tuesday and Thursday night. This is a great opportunity for family bonding.

Classroom instruction is not sufficient in itself; homework and review are additional components of a child’s learning experience. Furthermore, regular review enables a child to study less for tests. Summer homework, when assigned, helps many children retain the level they achieved at the end of the school year.

... *BAS MITZVAH* ...

Our school has a wonderful *Bas Mitzvah* program which is very meaningful for the girls, mothers, and grandmothers. Parents are charged for this beautiful event, but the Yeshiva heavily subsidizes the cost as well.

There is really no need for families to make another *bas mitzvah* ‘event’ for relatives and friends, but if you do choose to make one, it should be low key, and no students from either class may be invited.

HIGH SCHOOL PARENT HANDBOOK

PARTNERSHIP

Education is a three - way partnership between parent, school and student. Please let us know how we can make the learning experience in our Yeshiva a more meaningful and memorable one for your daughter.

Mrs. Zlata Press, Principal

Ms. Carmi Homburger, Associate Principal

Mrs. Chani Greenfeld, Associate Principal

The following section will introduce you and your daughter to the basic rules which regulate daily school life in Bnos Leah Prospect Park Yeshiva High School. It goes without saying that the fundamental rule of all our lives, in school and out, is the *halacha*.

School rules, though limited in scope, are important for the peaceful, safe, coexistence of the two hundred people who inhabit our building daily. Also, we greatly value the personal discipline developed by adherence to school rules.

- Discipline fosters respectful behavior toward parents, administrators, teachers and peers.
- Discipline is basic training for a life of *dikduk b'mitzvos* and *yiras shomayim*.
- Finally - discipline builds strong, productive, self-confident, responsible, contributive adults.

Parents sometimes take issue with one detail or another of the school rules.

Reasonable adults can be expected to see things differently. In choosing Prospect Park Bnos Leah for your daughter from among the wide array of Bais Yaakov schools available, you have chosen our style of *chinuch* as well. We count on you to support us fully in all matters—even if you might disagree with us on one detail or another.

Please read the handbook in full. If you have questions about any of the issues discussed here, you are welcome to call Rabbi Akiva Kelman, Mrs. Zlata Press, Ms. Carmi Homburger or Mrs. Chani Greenfeld to discuss them.

... THE ATTENDANCE SYSTEM ...

* HERE COMES REAL LIFE

In the real world adults are expected to take their responsibilities seriously and to show up regularly to fulfill them.

In college, in a pre-professional training program, on a job, people are expected to **show up every day**. The mother of young children doesn't have the luxury of "sleeping in" because she "doesn't feel well". The children have to be dressed, fed and sent off to school.

It is expected and accepted that serious illness or pressing personal need requires a day off once in a while. If an adult is taking off from work, school, or household

responsibilities, it is assumed that the absence is absolutely necessary. No excuses are required or expected.

But how often? At some point almost no excuse, no matter how reasonable, is acceptable. When you have missed the third deadline you lose your job. When you have missed the fourth college class session your mark drops a full grade. When you miss a third day of a six week training cycle—for the best of reasons—you are automatically put back to start the training cycle again with the next group.

We are joining the many high schools that have adopted an attendance policy that is closely modeled on real life. Ultimately, it doesn't matter how good the reasons for absences are, it matters how many the absences are.

* THE ATTENDANCE SYSTEM

The attendance compliance grade will be calculated into the Grade Point Average (G.P.A.) as a 4 time a week course. It will appear on the January and June report cards and on the official transcript. The top grade is 100.

With each further absence the attendance grade decreases. The attendance compliance grade is calculated this way:



2 absences or fewer = 100	7 absences = 75
3 absence = 95	8 absences = 70
4 absences = 90	9 absences = 65
5 absences = 85	10 absences = 60
6 absences = 80	more than 10 absences = 55

* MORNING LATENESSES

Coming late to Tefillah (after 8:30 AM or after 9:15 AM on mornings with period 1 free) will be counted as a full period absence.

A student may use these days for any of the following reasons:

- brief illness
- appointment (medical, DMV)
- catching up with life
- rest and recreation (preferably a day out with a parent!)

STUDENTS - AND THEIR PARENTS - ASSUME THAT IF AN ABSENCE IS LEGITIMATE IT DOESN'T COUNT TOWARD THE TOTAL NUMBER OF DAYS ABSENT. THIS IS INCORRECT. EVERY DAY OUT OF SCHOOL - FOR VALID REASONS INCLUDED - IS COUNTED TOWARD THE TERM TOTAL AND WILL LOWER THE COMPLIANCE GRADE.

Only the following reasons are completely excused and will not be counted toward the term total.

- extended illness with a physician's letter, the day of a sibling's wedding and a day before or after if out-of-state travel is required.
- the bris of a brother or nephew (only!)
- regularly scheduled therapy appointments with a note from the therapist.

In case of family emergencies or exceptional circumstances, we ask our students to please notify the grade mechanechet who will arrange whatever accommodations are necessary for the student and her family.

*** NEW** WE ARE REQUIRING THAT A PARENT E-MAIL A NOTIFICATION OF A STUDENT'S ABSENCE ON THE MORNING OF THE ABSENCE BEFORE 10:30 AM. THE E-MAIL SHOULD COME FROM A PARENT'S ACCOUNT AND SHOULD BE SENT TO **HSATTENDANCE@BLOPPY.ORG**

No student will be excused from finals unless she is seriously ill. Family trips should be scheduled for the days of inter-session. **No accommodations will be made for students whose families schedule trips during final exam time. Be aware that failure to take a final often results in failure for the course.**

*** SIGN-INS**

- A student may sign in late until **the start of third period - 10:30 AM.**
- She will be marked absent for **three periods** - davening, first and second periods. After 10:30 she will not be admitted.



- Every student who enters the building after 8:30 AM must sign in. If a student is found in the building without having signed in, she will be asked to go home. No student is permitted to sign in late in order to take a test!

A student will be permitted to sign in after 10:30 AM **only** if a parent calls with extenuating circumstances.

* SIGN-OUTS

There are few reasons for a student having to sign out in the afternoon. (A parent calling in to say her daughter “is not feeling well,” is rarely an adequate reason.)

Any student request for a sign-out in the afternoon requires the written approval of a principal. (Mrs. Press, Ms. Homburger, Mrs. Greenfeld) Only then may the student call home to get parental approval of the sign out.

* EXCUSED /UNEXCUSED ABSENCES FROM CLASS DURING THE SCHOOL DAY

Absences are excused IF:

- The student is meeting with a teacher or participating in a school activity AND an activity sheet is completed, signed and submitted no later than 3 days after the activity. Activity sheets submitted late will not be accepted.

Excessive absence from any one subject will be subject to a grade reduction in that subject at the discretion of the teacher and with the support of the administration.

No student is permitted out of Halacha class to work on a school activity. Missing a class without permission will be marked as two unexcused absences.

WHOSE RESPONSIBILITY IS IT?

This system places ownership for attendance compliance where it truly belongs—on each student. We expect this system to give our students more accountability, more flexibility and less paperwork.

With four days off a year for a grade of 100, a student should have no problem earning almost a full compliance grade to be added to her average and recorded on her transcript.

- The school records latenesses to school in the morning. **Your daughter is responsible for her own promptness in the morning and to each class during the day.** Do not allow her to transfer the responsibility to you. Regular lateness to school lowers the compliance grade.
- We absolutely insist that every student coming into school “late” - after Tefilla attendance - sign in at the front office desk.

- We provide each student with a form to enable her to track her own attendance record. We strongly urge her to fill it out. It will enable her to corroborate (or challenge!) our computer record.

... *ELECTRONIC DEVICES AT SCHOOL* ...

(Thank you to Rabbi Michoel Shepard, General Studies Principal of TAG Girls' High School, for permission to use his wording.)

* Cell Phones

Cell phone use, especially the quiet privacy of text messaging, has become ubiquitous in today's world and consequently can turn into a major distraction for a student in school. Therefore, cell phone possession and use is prohibited from arrival to departure anywhere on Prospect Park premises. Students who need to contact their parents should come to the office or use the phone in the front hall.

Cell phones are not allowed—not in pockets, not in bags. We require that the phones be stored in the cell phone lockers throughout the day, including during after hour school activities.

We ask every student who owns a phone to bring her phone every day and park it in the cell phone cabinet. (Unfortunately we have learned that some students who claim to have left their phones at home are in fact not being truthful.)



- A student who comes to school late should hand in her phone to the front office labeled with her name.
- **A student who knows that she will be leaving before the end of the day may leave her phone in the secretary's office to be reclaimed when she leaves ONLY with signed permission from a principal.**
- For students working on school projects, laptops will be available in the office. Students will be able to send their files from home to the laptop for use in school.
- **A student will not be allowed to remove her cell phone from the locker during the school day to access material which is on her phone, or to retrieve money or credit card. Plan ahead!**

* OTHER ELECTRONIC DEVICES

The rule for cell phones applies equally to other electronic toys, entertainment devices and Smart watches. Don't bring them to school. They will be confiscated, and other penalties could apply. If someone else has brought them, don't use them. If others are using them, leave the room.

... INFORMATION TO PARENTS ...

* SNOW DAYS? - YES! THEY WILL STILL EXIST!!

Now that we are all Zoom comfortable, many expressed concern that the special joy of childhood, "snow-days," would be sacrificed on the altar of Zoom! Be assured we will not deprive our community of the deliciousness of an unexpected day off. But do assume that while we will give off the first day of a major storm, subsequent days might well be Zoom days!

We will inform families of snow days via email sent to the parents' email addresses. Please make sure we have your updated email addresses on the enclosed contact information card.

... UNIFORMS ...

It goes without saying that the primary guideline for our students' dress, in school and out is the *Halacha*. In addition to the halacha, we have a strictly enforced dress code for appropriate in-school wear. Please make sure that your daughter has enough of each of the uniform items.

- 1) Skirts must be long enough to cover the knees even while seated. The school has a supply of "pre-owned" skirts which we are happy to distribute.
- 2) Students must wear the uniform shirt provided by our authorized supplier. This shirt is distinguished by a small B.L. embroidered on the collar and by a *tznius* button under the collar button. The uniform shirt is designed to be long enough to tuck completely into the skirt.

- 3) Students can wear a plain black pullover sweater with the Bnos Leah logo available from our supplier, or a plain, black sweater privately purchased. **We are also accepting as part of uniform wear any plain black sweatshirt with no words or logos, except for ones issued by school groups. All sweaters or sweatshirts must be worn over a COLLARED shirt. We are delighted to see our students wearing one of the many sweatshirts issued by our high school. Ninth graders may also wear 8th grade sweatshirts.**
- 4) Legs must be covered with **knee-socks** or tights. **Do not wear leggings. Do not wear leggings.**
- 5) Shoes should be simple and conservative. **DO NOT WEAR SLIPPERS**, i.e. shoes without a back. **Boots are not acceptable for school wear except on snowy or stormy days.**
- 6) Make-up and nail polish are not permitted for school wear. **A student wearing Gel polish will be asked to go home until she can have the polish removed.**
- 7) Jewelry should be simple and limited. Avoid the excessive or the extravagant. One earring per ear please.
- 8) **Hair longer than chin-length must be worn in a full ponytail, braid or bun with all hair away from the face.** Headbands or clips when worn alone are not acceptable for containing long hair. **Please do not artificially color your hair. A student will be required to return her hair to its natural color before she will be permitted to attend school.**



A student who repeatedly “forgets” to put her hair back will be required to wear her hair in a braid for the rest of the school year.

We do have an option to bypass a dress code rule for cause on any one day. Do ask about permission to be “legally illegal” on a given day.

- 9) Students not wearing appropriate socks or shirts will be asked to buy the appropriate clothing for a \$10 charge. If you go to your locker for the spare set of clothing you have stashed there - you will still have to pay a \$10 fine!

* ROSH CHODESH, SHABBOS DRESS AND CASUAL DRESS

Rosh Chodesh is a time to dress up and not dress down. Please do not wear camp or Sunday casual on Rosh Chodesh.

The tznius challenge of our generation is clothing that is short and/or form fitting. These are issues worth taking a stand on. Please spend the time necessary shopping and negotiating with your daughter to ensure that her clothing in school and out is appropriately modest in fit, length and coverage. Many of our lovely, refined students are wearing skirts that are impermissibly short or tight by standards of halacha or refinement. All skirts must generously cover the kneew, standing and sitting.



... LOST AND FOUND ...

We try our hardest to return every lost item that we can identify. We ask that you please label or mark *all* personal items which your daughter brings to school so that we can be *mekayem mitzvas hashavas aveida*.

However, many items, some valuable, remain unidentified and unclaimed. It is difficult to store unclaimed items until Yemos Hamashiach.

We ask that you be *mochel* on any possessions which your daughter leaves in the school over the course of the year that we are unable to return. All items that have not been claimed by the start of the next school year will be considered Hefker. LABEL, LABEL, LABEL, so that we can return, return, return!



... RECREATION ...

All of us, deans, principals, teachers, you our parents, and of course eternal Torah standards of kedusha are in total agreement as to the **unacceptability of boy/girl social interaction in the pre-shidduch years.**

In America's open, permissive society, if we want to uphold these standards, protecting Klal Yisroel, our families and our daughters we must be smart and pro-

active. כבודו וחשדו – "Respect and Suspect" is a wonderful motto for dealing with our children.

We can inform you; we can be מחנך your daughter. We will take action when we happen on students in the "wrong" place, with the "wrong" people – but the burden of responsibility is yours.

- 1) Your daughter should *not* be spending time hanging out with friends in our - or your local shopping districts (e.g. Avenue J, Avenue M, Coney Island Avenue, Kings Highway, Nostrand Ave.). **Local ice cream parlors, pizza stores, 7-11's and municipal parking lots and playgrounds are gathering places for girls and boys as are our avenues and parks (Marine Park and the Kings Highway Circle for example) on Shabbos and Yom Tov.** Numerous and extended visits to any of these places should have you asking questions and setting firm limits. A teenager regularly "going out to meet friends or for ice cream" on a school night should raise questions.(especially if she applies makeup to do so!) In an age of personal phones and easily available cars, casual "cute" meetings can and do morph into much more serious and prohibited conduct.
- 2) Bowling, roller skating and ice skating are appropriate recreational activities *when parents accompany their daughters*. Do not drop off your daughter and her friends at Aviator Skating Rink and leave her there unsupervised. Daughters who start off at one place can end up at another. **KNOW WHERE YOUR DAUGHTER IS and WITH WHOM.** Encourage her to enjoy leisure time at home with friends.
- 3) **No student may be enrolled in any co-ed program, camp, activity, or course of study during her high-school career.**
- 4) Your daughter may not go to a movie theater on her own with friends, or with you, her parents. Parents and students must be extremely selective about the sort of entertainment that is viewed in the home as well. Whether it reaches you by television, cable, Netflix, YouTube, Amazon Prime, Livestream, Vimeo, Hulu, or any other source, entertainment today is a far cry from the relatively tame fare of yesteryear. **In most contemporary "entertainment," the situations enacted, the moral standards presumed, the coarse language employed, and the social relationships portrayed reflect a world that is totally incompatible with our own. It is impossible for students to spend hours viewing this world without their own conduct and standards of right and wrong being affected, and their commitment to Torah values eroded.** With constant exposure, images, language and values which are abhorrent to our Torah life take up residence

in our children's minds, staying fixed there for years to come R"L to possibly erode the sanctity of their future Torah homes. Yes, as a community we do take advantage of many aspects of digital technology but, **the permission we give ourselves to say "yes", is the mission we must give ourselves to say "NO!"**

* INTERNET ACCESS

We absolutely oppose internet recreation or socializing. For your own sake support this stance. If we discover that your daughter has a presence on a social networking site (Instagram, Snapchat, Facebook, Twitter, **TikTok, VSCO** are examples) or has posted any reels, stories or posts of herself or of someone else on TikTok or Instagram, or clips on YouTube, we will seriously consider whether she should continue her association with us. This list is representative, but not inclusive. Every year brings a new "flavor of the month" which should be avoided even if not listed here by name. ***A bas yisroel tzenua does not display a picture of herself or any personal information on a billboard to be seen, appraised and tracked by any passing stranger - even if that stranger has a Jewish name. And surely, your daughter is forbidden to post pictures or comments about another person.***

If your daughter has internet access ask her to explain in detail how she uses it. If you aren't getting the reassurances you want or trust, act strongly to limit or eliminate.

Parents should regularly review all the family's technology accounts to see patterns of use, numbers called and time of communication in addition to the filtering which we assume is already in place.

Please, please, don't wink or look aside, or enable workarounds to school rules. We have thought about them long and hard. The child we are protecting is yours. The future home we hope to help create, is hers.

... DIGITAL TECHNOLOGY ...

Parents often say "I have to choose my battles." The battle to limit access to technology is a battle well worth fighting. The battle to control technology is a battle to protect Kedusha, Shmiras Shabbos, Kibbud Horim, Shmiras Halashon. To paraphrase *Chazal* - רב גופי תורה תליין בה! -

* TAG-TECHNOLOGY AWARENESS GROUP

Every family should be receiving a letter from us informing you of the requirement that each student have her phone TAGged. We have spent hours working with TAG consultants to achieve maximum personal convenience and protection at a reasonable cost. These people are warm, empathetic and non-judgemental. They seek to understand your personal needs and to protect your family while accomodating those needs.

Please read the letter and have your phone TAGged before the start of school.

* PARENT APPROVED CORNER CUTTING

Our requirements for filtering your children's cell phones are for your child's emotional, social and religious well-being. We see ourselves as supporting your goals for your daughter. Why are many of you providing your daughter a second phone enabling her to have a filtered phone to show us and an unfiltered phone for her own use?

We in the frum community have been enacting cell phone rules that the rest of the world is just now coming around to adopting. And you, our parents are complicit in your children's circumventing very very reasonable requirements. DON'T!

... DRIVING ...

Students may not drive to school. We strongly recommend that high school students not be permitted access to the family car *except* for specific and limited errands. Our teenage daughters should not be using the family car recreationally.

... VACATION ...

A whole term's worth of growth and maturation can be undone by a week in a lax environment. Do not toss away your child's valuable *chinuch* by allowing her to vacation in an unsupervised place. Unsupervised means without parents. Grandparents, aunts, uncles, and family friends are wonderful people, but they are unable to watch and entertain your daughter with nearly the same high level of

‘shmira’ that you can provide. **Do not let your daughter travel on her own or with minimal supervision, especially to sun and recreation spots.**

... *SCHOOL EXPENSES* ...



We respect the financial realities of life and try not to burden our parents with extra costs. However, we provide many extracurricular activities which are an important part of student life. In order to cover the costs of these activities there is a **G.O. fee of \$250.00 each year.**

Additional expenses adjusted for inflation include:

9th, 10th, & 11th Grade Expenses

School Weekend every two years	about \$400.00
Annual grade Shabbaton	about \$225.00

*** SENIOR YEAR EXPENSES**

The senior year bring with it many more expenses. Some are optional; many are not. We take very seriously our parents' financial concerns and do our best to minimize the expenses. (All extra expenses are hard to handle and surprises are doubly hard!) Please be aware of senior year expenses at the start of the year and budget for them.

G.O. Fee	\$250.00
Yearbook	\$100.00
Annual 12th Grade Shabbaton (optional)	about \$225.00
School Weekend every two years	about \$400.00
Senior trip (optional) - Anywhere from \$200 - \$400 depending on the destination.	
Graduation fee--(added to tuition charge)	\$100.00
Touro College credits (optional)	up to \$1500.00
Dor Yeshorim Testing	\$350.00
Senior Photos	\$100.00
Seminary Application fees (optional)	\$150.00 per seminary

TZEDAKAH BEGINS AT HOME

We occasionally ask parents who can afford to, to contribute money above the amount required to help pay for any student activity for students whose families can't afford the full cost of the activity. We deeply appreciate these contributions when we receive them.

Needless to say all money contributed goes directly to defray the cost to students in need.

And if you are feeling **very** generous, Mrs. Press yearns for a private “slush” fund for special food treats, small gifts, speakers and other random good ideas!

We put a lot of thought into our school rules. We revise them every year to make sure that they accurately reflect changing times and the realities of our students' families. Please read this handbook and commit yourself to following its guidelines.

Bnos Leah Prospect Park Yeshiva School Calendar 2025-2026				
Day/Event	Date	Nursery/Preschool	Elementary School	High School
Start of School	September 2 Tuesday	Teacher's Meeting	Teacher's Meeting	Grade 10 & 12 Orientation
Start of School	September 3 Wednesday	Joint Staff Meeting	Joint Staff Meeting Grade 1 Orientation by apt.	Grade 9 & 11 Orientation
Start of School	September 4 Thursday	Orientation by appointment	First day of class NOTE: 12:30 Dismissal	First day of Classes
Start of School	September 5 Friday	First day of classes		
Rosh Hashana	September 22-24 Monday-Wednesday	No Sessions	No Sessions	No Sessions
Tzom Gedalya	September 25 Thursday	12:30 Dismissal	12:30 Dismissal	12:30 Dismissal
Yom Kippur & Succos	October 1-16 Wed.-Thursday	No Sessions	No Sessions	No Sessions
School Resumes	October 17 Friday	October 17 Friday	October 17 Friday	October 17 Friday
Veterans Day	November 11 Tuesday	No Sessions Prof. Development Day	No Sessions Prof. Development Day	Regular Sessions
High School Post Mid-Term Day	November 24 Monday	Regular Sessions	Regular Sessions	No Sessions
Thanksgiving Day	November 27 Thursday	Father/Daughter Workshop	12:30 Dismissal	12:30 Dismissal
Chanukah Vacation	December 18-22 Thursday-Monday	Chanukah Vacation	Chanukah Vacation	Chanukah Vacation
Asara B'Teves	December 30 Tuesday	12:30 Dismissal	12:30 Dismissal	12:30 Dismissal
PPY Annual Dinner	To be Announced	Hope to see you!	Hope to see you!	Hope to see you!
Mid-Winter Vacation		January 30- Feb. 3 Friday - Tuesday	January 30- Feb. 3 Friday - Tuesday	January 29- Feb. 4 Thurs. - Wed.
President's Day	February 16 Monday	No Sessions	No Sessions	No Sessions
Taanis Esther	March 2 Monday	12:30 Dismissal	12:30 Dismissal	12:30 Dismissal
Purim/Shushan Purim	March 3-4 Tuesday-Wed.	No Sessions	No Sessions	No Sessions
Pesach Recess		March 27-April 12 Friday-Sunday	March 27-April 12 Friday-Sunday	March 24-April 12 Tuesday-Sunday
School Resumes	April 13 Monday	April 13 Monday	April 13 Monday	April 13 Monday
Shavuot	May 21-May 23 Thursday-Shabbos	No Sessions	No Sessions	No Sessions
Memorial Day	May 25 Monday	No Sessions	No Sessions	Regular Sessions
Last Day of School	June	TBA	TBA	TBA